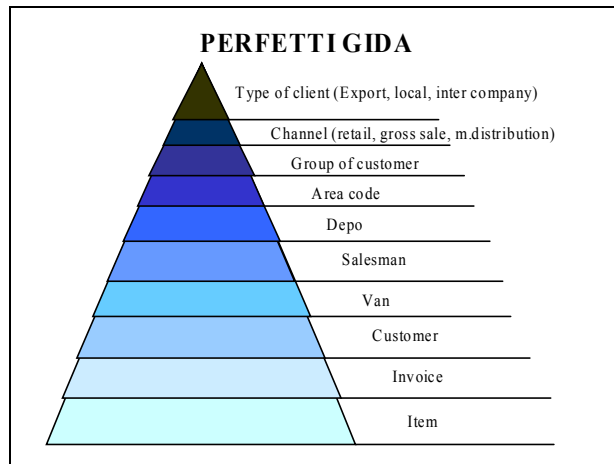


# Year 2000

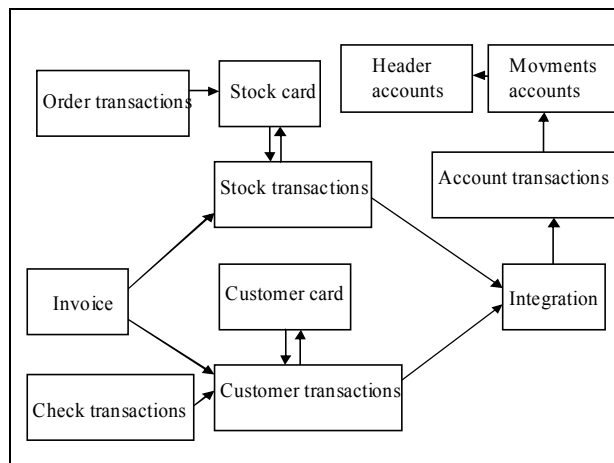


Slide 2

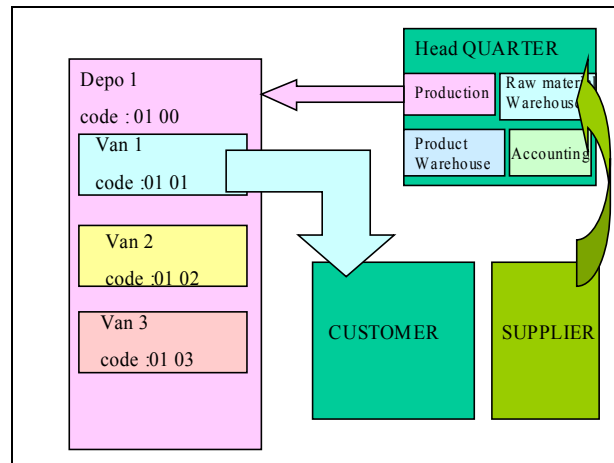
**PERFETTIGIDA**

User	Customer	Stock	Account
HQ	Head Quarter	Head Quarter	Head Quarter
DP1	Depo 1	Depo 1	Depo 1
		Van 1	
DP2	Depo 2	Van 2	Depo 2
		Depo 2	
		Van 1	
DP3	Depo 3	Van 2	Depo 3
		Depo 3	
		Van 1	
		Van 2	

Slide 3



Slide 4



Slide 5

- **Stock cards**
  - Item code
  - item name
  - total quantity, total amount
  - total entry quantity and amount
  - total sortie quantity and amount
  - many fields for other coding
- **Stock transactions**
  - Item code
  - date
  - document number
  - quantity
  - amount
  - many fields for coding

Slide 6

- **Order transactions**
  - Item code
  - date
  - document number
  - quantity
  - amount
  - many fields for coding

## Slide 7

- **Customer cards**

- Customer code
- Customer name
- total credit, debit
- many fields for other coding

## Slide 8

- **Customer transactions**

- First record:
  - . customer code
  - . date
  - . document number
  - . goods amount
  - . many fields for coding
- Second record:
  - . customer code
  - . date
  - . document number
  - . discount amount
- Third record:
  - . customer code
  - . date
  - . document number
  - . tax amount

## Slide 9

- **Check transactions**

- Customer code
- date
- document number
- amount
- fields for other coding

Slide 10

- |   |  |
|---|--|
| <ul style="list-style-type: none"><li>• <b><u>Header accounts</u></b></li><li>• Account code</li><li>• Account name</li><li>• credit and debit</li><li>• some fields for extra coding</li></ul> | <ul style="list-style-type: none"><li>• <b><u>Transacion accounts</u></b></li><li>• Account code</li><li>• Account name</li><li>• credit and debit</li><li>• some fields for extra coding</li><li>• cost centers</li><li>• credit/ debits by month</li></ul> |
|---|--|

Slide 11

- |  |
|--|
| <ul style="list-style-type: none"><li>• <b><u>Accounting transactions</u></b></li><li>• Account code</li><li>• credit and debit</li><li>• some fields for extra coding (including cost center)</li></ul> |
|--|

Slide 12

- |   |   |   |
|---|---|---|
| <b>PERFETTIGIDA</b><br><b>Main office</b>   |   |   |
| <ul style="list-style-type: none"><li>• Citrix server</li><li>• 500 mhz proc.</li><li>• 256 mb ram (depends on number of users)</li><li>• 1 gb disk</li></ul> | <ul style="list-style-type: none"><li>• Nt server</li><li>• raid 5</li><li>• backup</li><li>• 3 9gb disks</li><li>• 500 mhz</li><li>• 128 mb ram</li><li>• cache on 2nd level</li></ul> | <ul style="list-style-type: none"><li>• Mail server</li><li>• raid 5</li><li>• 500 mhz proc.</li><li>• 128 mb ram</li><li>• 3 9gb disks</li></ul> |

Slide 13

**PERFETTIGIDA**  
Regions

- Client
- 133 mhz proc.
- 16 mb ram
- 800 mb disk

**Year 2000**

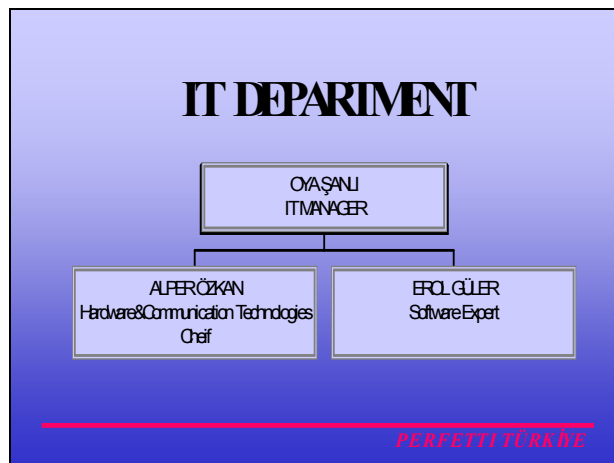
**IT DEPARTMENT**

Prepared by: OYA ŞANLI

---

*PERFETTI TÜRKİYE*

Slide 2



Slide 3

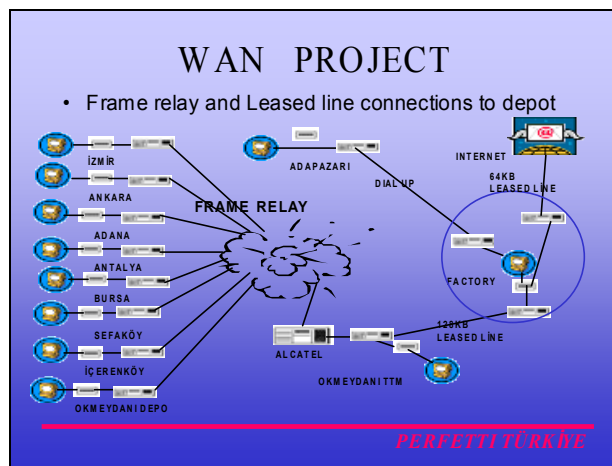
## IT PROJECTS

- WAN PROJECT
- HARDWARE UPGRADE
- SOFTWARE UPGRADE

---

*PERFETTI TÜRKİYE*

Slide 4



Slide 5

## WAN PROJECT

- All depot except Adapazarı connect to Okmeydanı TTM with Frame Relay lines
- Okmeydanı TTM connect to factory with 128kb Leased Line.

---

*PERFETTI TÜRKİYE*

Slide 6

## WAN PROJECT

- Ethernet cards and Windows 98 installed at depots
- Leased line between Okmeydanı and Factory had been tested. The rate was 64kb, because the application form for Türk Telekom had been filled out as 64kb rate.
- 64kb Leased line for internet and mail had been tested and the line is working.
- Frame relay line for Okmeydanı depot will be tested.

*PERFETTI TÜRKİYE*

Slide 7

## HARDWARE UPGRADE

- Internet and Mail Server upgraded to Compaq ML 350
- File Server will be upgraded to Compaq ML 530

*PERFETTI TÜRKİYE*

Slide 8

## SOFTWARE UPGRADE

- After WAN Project finishes
  - Windows 2000 will be installed on to our new file server.
  - Terminal server on Windows 2000 will be using to make software connections

*PERFETTI TÜRKİYE*

Slide 9

**SOFTWARE UPGRADE**

- After WAN project and hardware upgrade finished, to prepare for software upgrade IT department will do the simulation
- For simulation factory servers and Sefaköy depot's Pc will be using

---

*PERFETTI TÜRKİYE*

Slide 10

**SOFTWARE UPGRADE**

- After simulation in order to be centralized:
  - 1. Depots' data will be copied to our new file server
  - 2. Path configuration must be done for depots to use data on the new file server.
  - 3. All depot will use the same sale database

---

*PERFETTI TÜRKİYE*

Slide 11

**SOFTWARE UPGRADE**

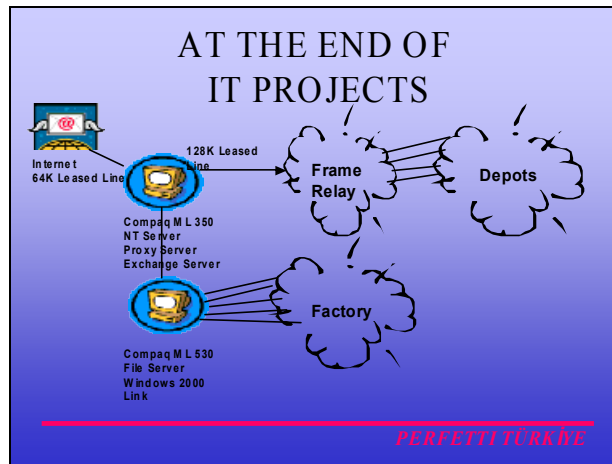
- After checking integrity and verification for data using by depot
  - Link software will be upgraded
  - All depot will use same stock database to keep up with their trucks

---

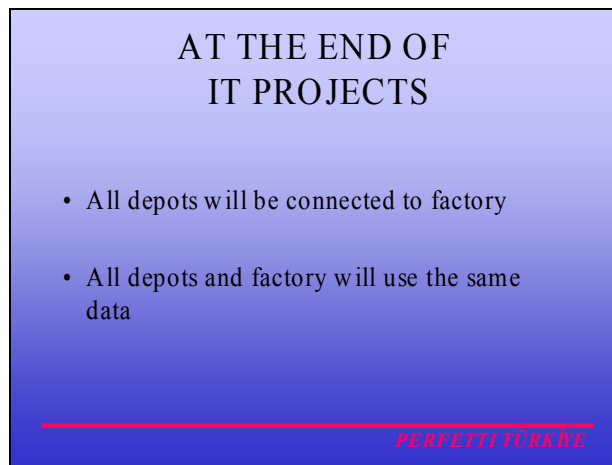
*PERFETTI TÜRKİYE*



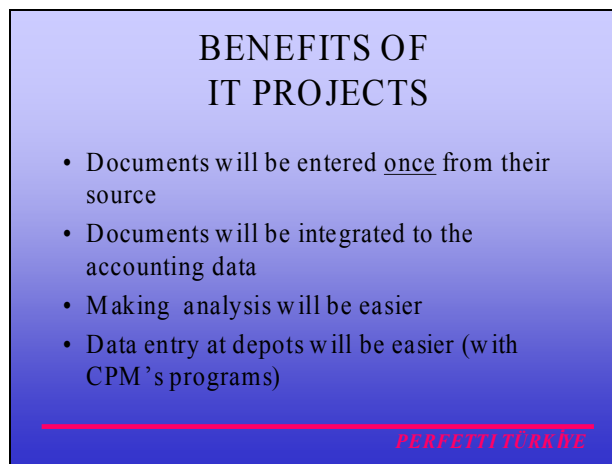
Slide 12



Slide 13



Slide 14



Slide 15

**BENEFITS OF  
IT PROJECTS**

- Communication with depots will be easier via mail
- Since the factory will be the data center gathering and obtaining information will be easier

---

*PERFETTI TURKKE*

Slide 16

**Bottlenecks OF  
IT PROJECTS**

- Having problems with Turkish Telecom , because of its substructure
- Having problems while gathering information from our employees, because they don't know about work flow and software they are using

---

*PERFETTI TURKKE*

**Year 2001**

Slide 1

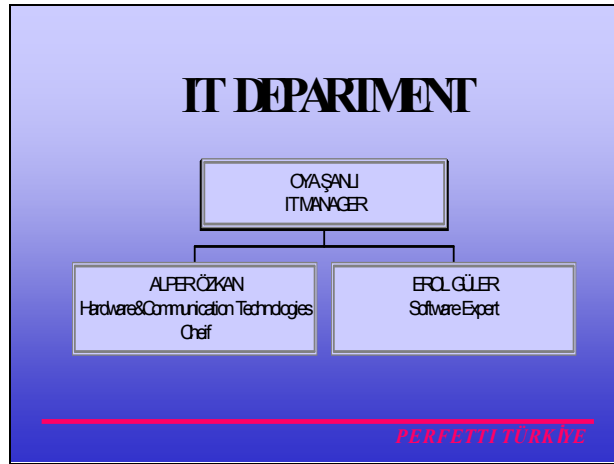
**IT DEPARTMENT**

Prepared by: OYA ŞANLI

---

*PERFETTI TURKKE*

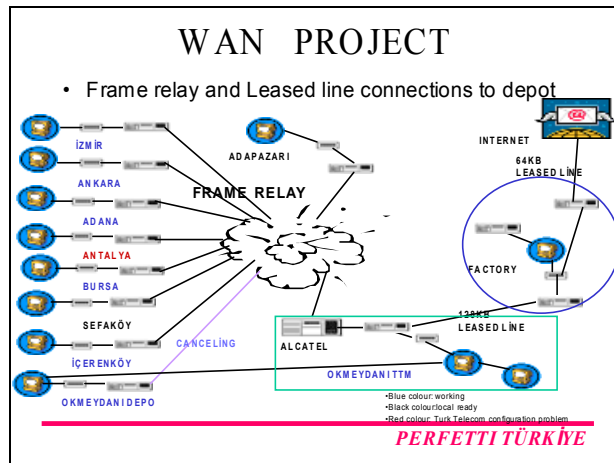
Slide 2



Slide 3



Slide 4



Slide 5

**WAN PROJECT**

- All depot connect to Okmeydanı TTM with Frame Relay lines
- Okmeydanı TTM connect to factory with 128kb Leased Line.

---

*PERFETTI TÜRKİYE*

Slide 6

**WAN PROJECT**

- The rate of the leased line between Okmeydanı and Factory will be 128 x 2 kb
- All depots will use mailboxes in our exchange server.

---

*PERFETTI TÜRKİYE*

Slide 7

**HARDWARE UPGRADE**

- File Server will be upgraded to Compaq ML 530
- Some depots PC's will be upgraded

---

*PERFETTI TÜRKİYE*

Slide 8

**SOFTWARE UPGRADE**

- After WAN Project finishes
  - Windows 2000 will install to our new file server.
  - Terminal server on Windows 2000 will be using to make software connections

---

*PERFETTI TÜRKİYE*

Slide 9

**SOFTWARE UPGRADE**

- After WAN project and hardware upgrade finished to prepare for software upgrade IT department will do the simulation
- For simulation factory servers and Sefaköy depot's PC will be using

---

*PERFETTI TÜRKİYE*

Slide 10

**SOFTWARE UPGRADE**

- After simulation in order to be centralised:
  - 1. Depots' data will be copied to our new file server
  - 2. Path configuration must be done for depots to use data on the new file server.
  - 3. All depot will use the same sale database

---

*PERFETTI TÜRKİYE*

Slide 11

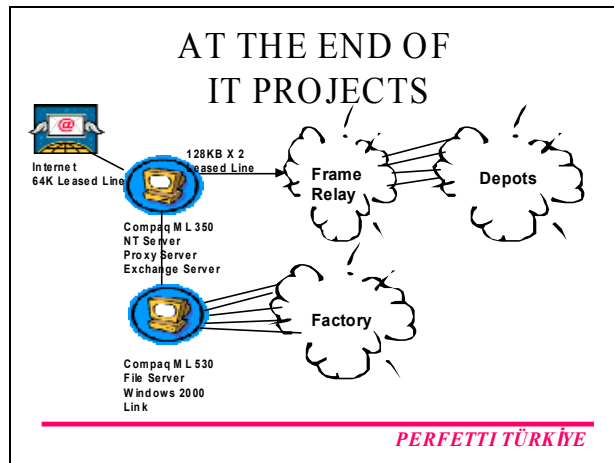
## SOFTWARE UPGRADE

- After checking integrity and verification for data using by depot
  - Link software will be upgraded
  - All depot will use same stock database to keep up with their trucks

---

*PERFETTI TÜRKİYE*

Slide 12



Slide 13

## AT THE END OF IT PROJECTS

- All depot will be connected to factory
- All depot and factory will use the same data

---

*PERFETTI TÜRKİYE*

Slide 14

**BENEFITS OF  
IT PROJECTS**

- Documents will be entered once from their source
- Documents will be integrated to the accounting data
- Making analysis will be easier
- Data entry at depots will be easier (with CPM's programs)

---

*PERFETTI TÜRKİYE*

Slide 15

**BENEFITS OF  
IT PROJECTS**

- Communication with depots will be easier with mail
- Since the factory will be the data centre gathering and obtaining information will be easier

---

*PERFETTI TÜRKİYE*

Slide 16

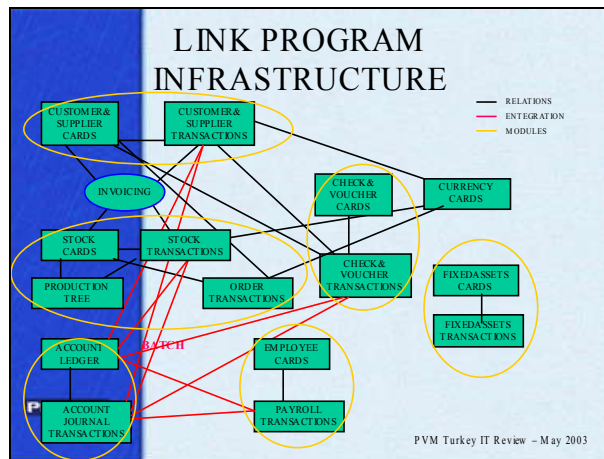
**Bottlenecks OF  
IT PROJECTS**

- Having problems with Turkish Telecom, because of its substructure
- Having problems while gathering information from our employees, because they don't know about work flow and software they are using

---

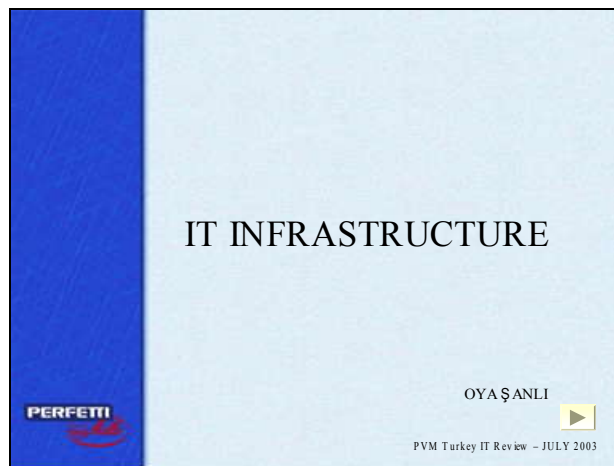
*PERFETTI TÜRKİYE*

May 2003

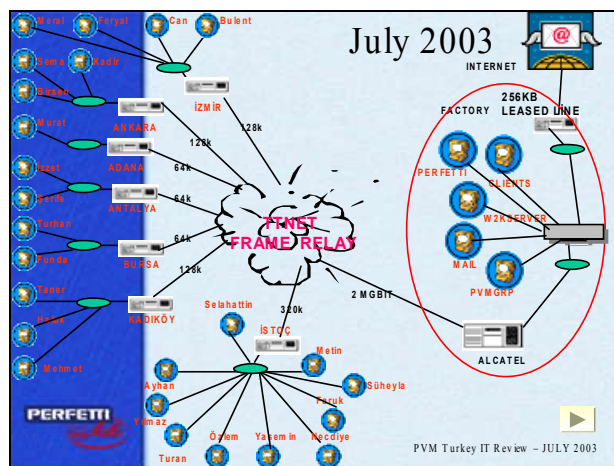


July 2003

Slide 1

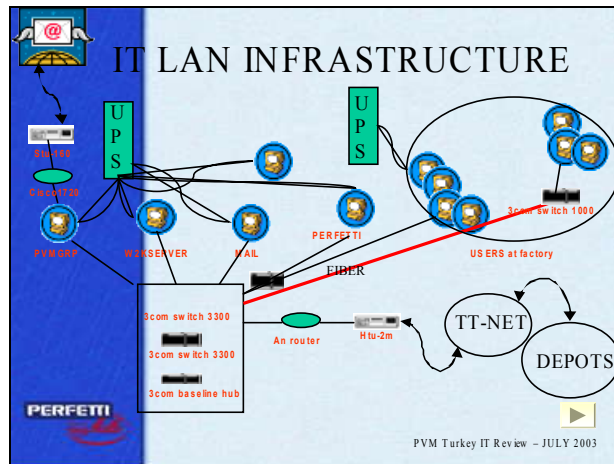


Slide 2

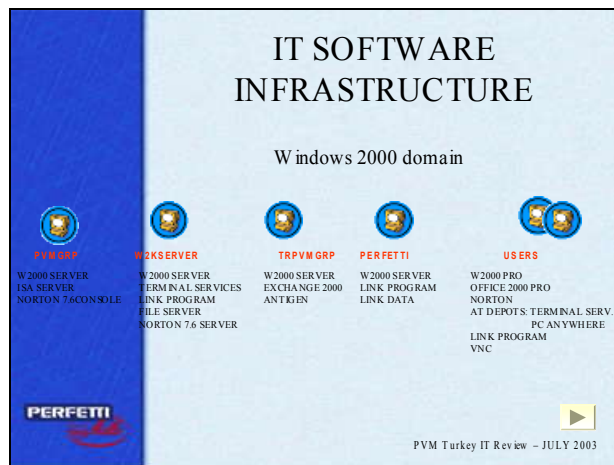




Slide 3



Slide 4





Slide 5

- ### IT PROJECTS
- **DOMAIN UPGRADE :**
    - Clients have already upgraded to Windows 2000 Pro and Office 2000 Pro
    - Servers have just upgraded to Windows 2000 Active Directory.
  - **WORK-FLOW APPLICATIONS:**
    - Flow of the ISO Forms in the company:  
Using outlook forms and programming we will get rid of papers and manage the circulation on Exchange 2000 server.
- The 'PERFETTI' logo is in the bottom left, and 'PVM Turkey IT Review - JULY 2003' is in the bottom right.

Slide 6

## IT PROJECTS

- **HANDBELD PROJECT FOR CHAINED MARKETS**
  - An handheld and a printer will be in the vans to print the waybill with markets' article codes to the chain markets.
  - Data on the handhelds will be transferred to the server at main office.
  - Invoices will be printed using additional discount tables from depots.




PVM Turkey IT Review - JULY 2003

Slide 7

## IT PROJECTS

- **SAP PROJECT**
  - Around September we will begin to take first steps.
  - At the beginning of next year we will proceed on analyzing phases
  - At the beginning of 2005 we will begin to use SAP program.
- **SAP MODULES:**
  - Finance and Controlling
  - Material Management
  - Sales and Distribution



PVM Turkey IT Review - JULY 2003

Slide 8



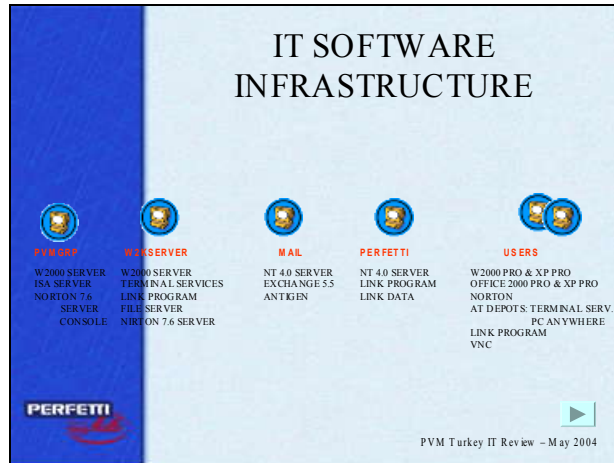
## QUESTIONS ?



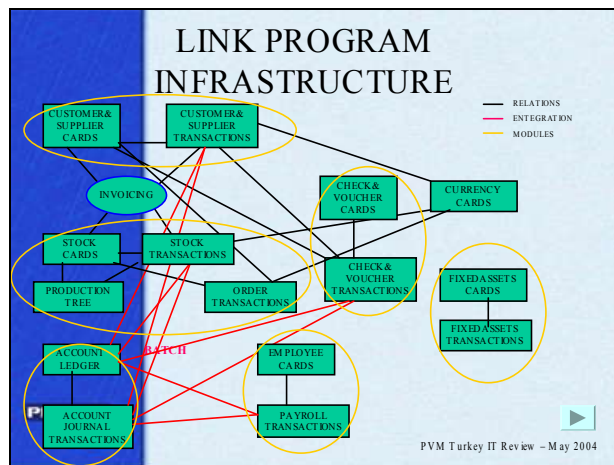
PVM Turkey IT Review - JULY 2003

May 2004

Slide 1



Slide 2



Slide 3

